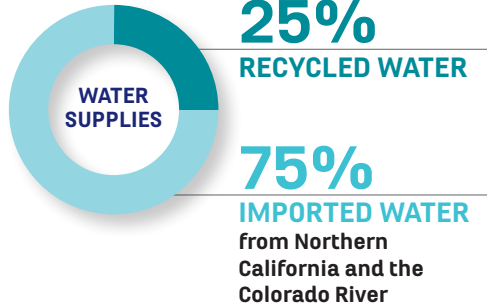
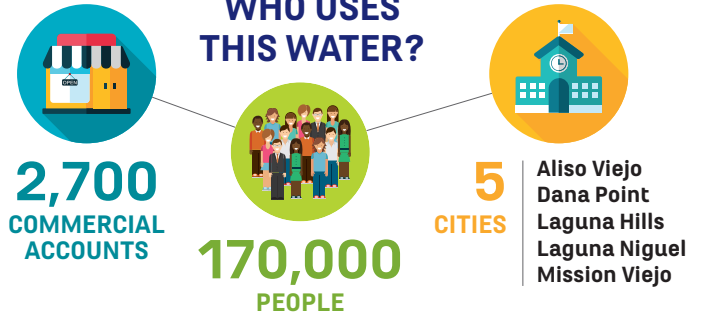


# Managing South Orange County Water Through the Drought

## WHERE DOES OUR WATER COME FROM?



## WHO USES THIS WATER?



## WHAT'S THE PROBLEM

California faces a fourth year of extreme drought, a rebounding economy, and a growing population. In the face of these challenges, Governor Brown has called for a mandatory **25 percent reduction in statewide water use** and the State Water Resources Control Board has enacted mandatory conservation regulations.



## WHAT SHOULD I DO?

# Stay within your water budget

Your water budget for 03/09/15 - 04/06/15 = **15 Billing Units (BU)**  
Persons in household = 4 ET Total = 4.37  
Estimated landscape irrigation area = 1,732 sq feet

## WHAT ELSE CAN I DO?

TO HELP CONSERVE WATER SUPPLIES MNWD ENCOURAGES CUSTOMERS TO FOLLOW THESE BEST WATER MANAGEMENT PRACTICES:

### DO



Replace your lawn with drought-tolerant landscaping



Check for and fix leaks, breaks or malfunctions



Ensure outdoor watering does not produce excessive water flow or runoff

### DON'T



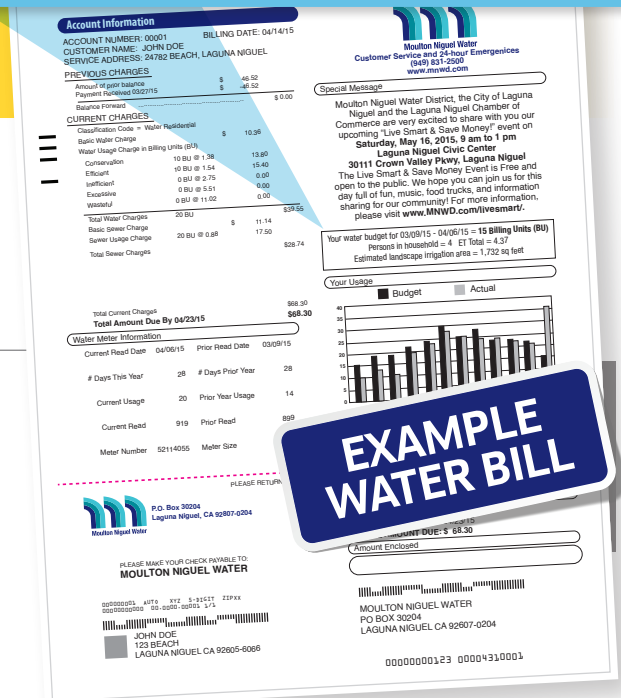
Wash down hard or paved surfaces



Wash your car at home; instead, use a commercial car wash



Request water at restaurants unless you're going to drink it



**EXAMPLE WATER BILL**

(1 BU = 748 gallons of water)

## WHAT ARE WE DOING?

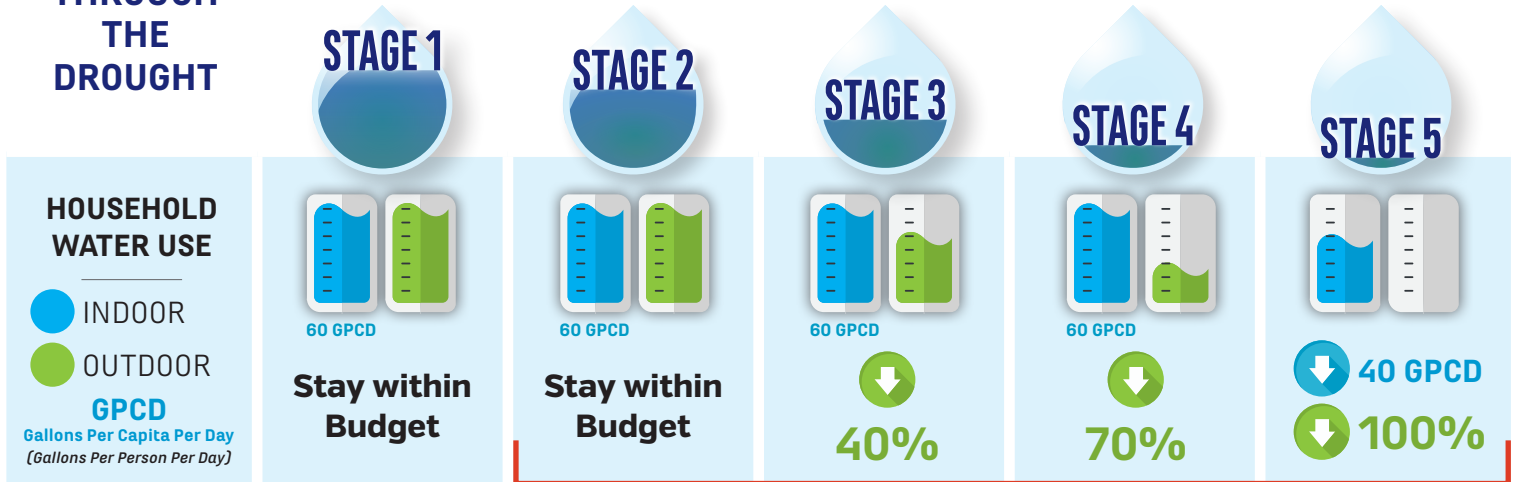
### MNWD: MEETING THE WATER NEEDS OF SOUTH ORANGE COUNTY

In response to the drought, MNWD has adopted a Water Shortage Contingency Plan and budget-based rate structure. The District has linked these innovative programs to proactively address water challenges.

## MANAGING WATER SUPPLIES THROUGH THE DROUGHT

### WATER SHORTAGE CONTINGENCY PLAN

MNWD has adopted a five-stage water shortage contingency plan. The contingency plan uses a phased approach to ease customers into heightened levels of water use efficiency based on the availability of water supplies and the response by customers to each stage. Each stage requires heightened levels of water conservation.



THERE ARE PENALTIES FOR EXCEEDING WATER BUDGET IN STAGES 2-5.

### CONSERVATION-BASED WATER BUDGET CHANGES

To manage limited water supplies, MNWD has updated customers' water budgets. The following changes took effect April 1, 2015:



#### INDOOR WATER BUDGET

Indoor water budgets have been reduced from 65 gallons per person per day to **60 gallons per person per day**.



#### OUTDOOR WATER BUDGET

Outdoor water budgets have been reduced to **sustain a mix of California native plants and lawn, not a full lawn.**

## ADVANCING SOLUTIONS TO MEET WATER SUPPLY NEEDS



**Expanding Recycled Water Use**



**Implementing Leak Detection Programs**



**Evaluating Water Supply Solutions**  
e.g. Desalination



**Offering Voluntary Water Saving and Rebate Programs**

Despite population growth and economic recovery, our customers have reduced water use to levels not seen since 1991.

SAVINGS OF NEARLY

**2 MILLION GALLONS**

OF WATER PER DAY

**26% REDUCTION**

IN TOTAL DISTRICT-WIDE WATER USE



The District is committed to conservation and continues to offer **voluntary water saving programs**, including turf removal rebates, home water surveys, sprinkler adjustments and more. These programs have proven effective in conservation efforts. For more information on voluntary conservation programs and practices, please visit:

[www.mnwd.com](http://www.mnwd.com)  
(949) 831-2500