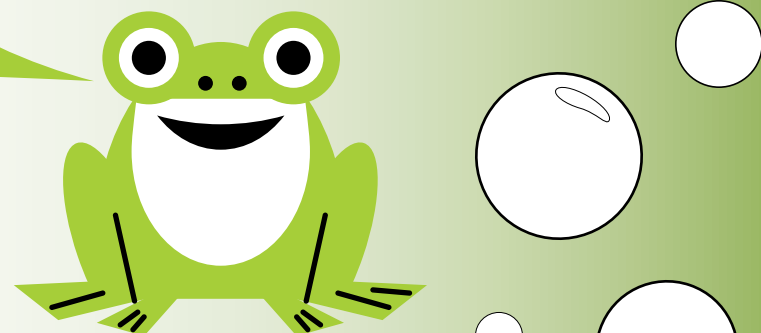


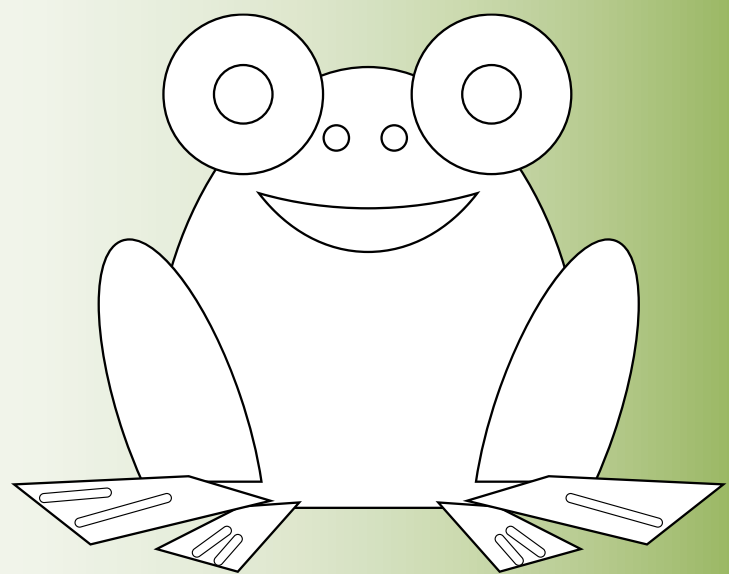
# KID'S CORNER



## Word Scramble

Complete the sentence by unscrambling the letters.

1. Without \_\_\_\_\_ the earth will look like the moon.  
rtwae
2. Check household faucets for \_\_\_\_\_.  
ekasl
3. Keep \_\_\_\_\_ to 5 minutes or less.  
owshres
4. Use a broom to \_\_\_\_\_ the driveway.  
laecn
5. Use a \_\_\_\_\_ to wash your parent's car or your bike.  
kutebc
6. Don't leave water \_\_\_\_\_, make sure to turn it \_\_\_\_\_ when done.  
unnrign                  fof
7. Water only the \_\_\_\_\_, not the sidewalk.  
sasrg
8. Water your lawn only in the \_\_\_\_\_ and the \_\_\_\_\_.  
romngi                  ithgn
9. Turn off the water when \_\_\_\_\_ your teeth.  
rubsihng
10. Share water \_\_\_\_\_ tips with your friends and family.  
visang



Color Me!

## Cool Web Sites to Check Out!

- [www.evmwd.com/depts/admin/public\\_affairs/conservation/kids\\_corner.asp](http://www.evmwd.com/depts/admin/public_affairs/conservation/kids_corner.asp)
- [www.llwd.org/kids-corner.cfm](http://www.llwd.org/kids-corner.cfm)
- [www.wateruseitwisely.com/kids/index.php](http://www.wateruseitwisely.com/kids/index.php)
- [www.mswd.org/kids.aspx](http://www.mswd.org/kids.aspx)
- [www.mwdh2o.com/mwdh2o/pages/education/h2o/h2o.html](http://www.mwdh2o.com/mwdh2o/pages/education/h2o/h2o.html)

ANSWERS:  
1. water 2. leaks 3. showers 4. clean  
5. bucket 6. running, off 7. grass  
8. morning, night 9. brushing 10. saving

## 'WATER IS LIFE' Poster Contest & Science Fair Winners

### EVMWD Honors Young Artists & Scientists

Seventeen local elementary students were honored for their artistic skill in EVMWD'S Poster Contest and academic excellence in water-related science fair projects at the May 26th EVMWD Board of Directors meeting during Water Awareness Month.



### The poster winners included:

**Grand Prize**  
David Torres – Wildomar School  
Garrett Gauf – William Collier School

**First Place**  
Alexia Hernandez – Earl Warren School  
Natalie Link – Railroad Canyon School

**Second Place**  
Julya Garcia – Railroad Canyon School  
Tristan Navarette – Earl Warren School  
Carla Uriostigui – Withrow School

**Third Place**  
Kolleen Russo – Withrow School  
Yvette Ledezma – Elsinore Elementary School

### Science fair project winners included:

**Grand Prize**  
Ryan Ringer – Luiseno School  
Jacob Dodd – Elsinore Middle School

**First Place**  
Taylor Jolly – Railroad Canyon School  
Rachel Smith – Lakeland Village Middle School

**Second Place**  
Christian Baello – Cottonwood School  
Kabir Torres – Elsinore Middle School

**Third Place**  
Austin Hawkins – Luiseno School  
John Dixon – Lakeland Village Middle School



Elsinore Valley Municipal Water District

(951) 674-3146  
[www.evmwd.com](http://www.evmwd.com)

### BOARD OF DIRECTORS

Phil Williams, Division 4 – President

Judy Guglielmana, Division 3 – Vice President

W. Ben Wicke, Division 1

Harvey R. Ryan, Division 2

John Lloyd, Division 5

General Manager: Ronald E. Young, P.E., DEE

FALL 2009

# THE EVMWD WATER LOG

The EVMWD Customer Newsletter

## RATE STRUCTURE REFRESHER

Elsinore Eddie has been keeping a close eye on his water budget. Have you?

EVMWD's new water budget rate structure is a fair way to promote efficient water use and discourage waste. Here is some useful information to help you adjust to EVMWD's new rate structure.

**And remember... the average bill covers 30 days of service, but occasionally the billing cycle is longer and the bills are larger. When the cycle is shorter, Eddie's bills are smaller. When the cycle is more than 30 days, the bill is bigger.**

### New Rate Refresher

Elsinore Eddie is a typical customer of EVMWD. Like nearly 20,000 other customers, his home sits on a parcel that is .18 acres or about 7,840 square feet. EVMWD customers are divided into five parcel categories and budgeted water according to their property size. Elsinore Eddie falls into parcel category No. 2, as do the vast majority of EVMWD customers.

Elsinore Eddie maintains his water budget by making sure he does not exceed his EVMWD water budget. Think of his water budget as buckets of water. He uses his first bucket of water for indoor uses (Block 1) and his second bucket (Block 2) to maintain a 4,700 sq.-ft. yard. Here is a snapshot of Elsinore Eddie's water use:

### Block 1 – Indoor Budgets (Efficient Indoor Budget)

- Every household is allowed 60 gallons per person per day.
- **Example:** Four people = 240 gallons per day or 9.6 CCF\* each month of the year.

### Block 2 – Outdoor Budgets (Efficient Outdoor Budget)

- Budget is based on the type of plants, local weather, irrigation efficiency and square footage.
- Since water needs change with the seasons, water budgets will increase from the winter (October-April) to the summer (May-September) seasons.
- **Example:** Eddie can use 184 gallons (7.4 CCF\*) a day during winter and 414 gallons (16.5 CCF\*) a day during the summer to maintain a mixed landscape of turf, shrubs and native plants.

Elsinore Eddie's monthly water budget is based on the weather and landscaping needs throughout the year. Eddie receives

a larger water budget in the hot summer months (May-September) when plants and lawns need more water. In the cooler fall and winter months (October-April), his outdoor water budget is reduced because plants need less water.

EVMWD's rate structure accounts for seasonal variations and the square footage of irrigated landscape area on a property.

**During the cooler months in fall and winter Eddie can save on his bill by reducing his water consumption to about half of what was required to keep plants healthy in the summertime.**

### Understanding Your Bill in the Summer

Efficient water users, such as Eddie, will stay in Blocks 1 and 2 and pay the lowest rates:

#### Block 1

- The low-volume discount rate (Up to 9.6 CCF\*) = \$1.74 per CCF\*
- **Example:** Eddie's Block 1 total - \$1.74 X 9.6 CCF\* = \$16.70

#### Block 2

- Efficient summertime outdoor watering (9.7-26.2 CCF\*) = \$2.32 per CCF\*
- **Example:** Eddie's Block 2 total - \$2.32 X 16.5 CCF\* = \$38.28

The average summertime use for Elsinore Eddie on an **average 30-day cycle** is:

\$13.85 service charge  
\$10.74 power charge  
\$42.75 sewer charge  
\$16.70 for Block 1  
\$38.28 for Block 2

**\$122.32 TOTAL**

### Understanding Your Bill in the Winter

During the winter, when his landscape needs less water on a daily basis, Eddie's outdoor budget drops to 7.4 CCF\*. As long as Eddie adjusts his watering schedule to reflect the cooler climate, he will still remain in Blocks 1 and 2 and pay the lowest rates:

#### Block 1

- The low-volume discount rate (Up to 9.6 CCF\*) = \$1.74 per CCF\*
- **Example:** Eddie's Block 1 total - \$1.74 X 9.6 CCF = \$16.70

#### Block 2

- Efficient wintertime outdoor watering (9.7-17.1 CCF) = \$2.32 per CCF\*
- **Example:** Eddie's Block 2 total - \$2.32 X 7.4 CCF = \$17.17

The average wintertime use for Elsinore Eddie on an **average 30-day cycle** is:

\$13.85 service charge  
\$ 6.97 power charge  
\$42.75 sewer charge  
\$16.70 for Block 1  
\$17.17 for Block 2

**\$ 97.44 TOTAL**

The rates for Eddie's service, power, and sewer charges will remain unchanged through the year.

If Elsinore Eddie uses more than his water budget, his water rates will increase significantly.

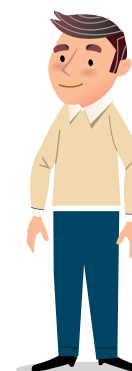
### Water Rate Variances

Some EVMWD customers may require a greater base water budget, and they may apply for a variance to meet their needs. Common variances are based on:

- **Number of People in Household** – Not every household is like Elsinore Eddie's family of four. EVMWD can give you a larger water budget if there are more people in your home. Please notify EVMWD if you have a household of five people or more.
- **Swimming Pools** – EVMWD will adjust your bill every five years so you can fill or refill your swimming pool. Please notify EVMWD when filling your pool to take advantage of the rate adjustment.

It is crucial to use the right amount of water allotted to each household. If Elsinore Eddie or his neighbors are having trouble staying in their water budgets, EVMWD offers plenty of ways to help customers become water efficient both indoors and outdoors. We can help you learn how to save water with California-friendly plants and rebates on water-saving devices.

Please visit [www.EVMWD.com/conservation](http://www.EVMWD.com/conservation) or call EVMWD's conservation specialist at (951) 674-3146 x 8247.



Water Use	Summer Budgets	Winter Budgets*	Rates per CCF
<b>Block 1: Low Volume Discount</b>	1.0 - 9.6 CCF	1.0 - 9.6 CCF	<b>\$1.74</b>
<b>Block 2: Conservation Base</b>	9.7 - 26.2 CCF	9.7 - 17.1 CCF	<b>\$ 2.32</b>
<b>Block 3: Inefficient Use 2x Base</b>	26.3 - 43 CCF	17.2 - 24.6 CCF	<b>\$ 4.64</b>
<b>Block 4: Excessive Use 3x Base</b>	43.1 - 59.7 CCF	24.7 - 32.1 CCF	<b>\$ 6.96</b>
<b>Block 5: Wasteful 4x Base Rate</b>	59.7+ CCF	32.1+ CCF	<b>\$ 9.28</b>

Conservation Budget Rate  
Higher rates for excessive/wasteful use

\*1 CCF = 748 Gallons  
(Blocks reflect average allocation. Actual allocations are based on property size and weather data.)



Elsinore Valley Municipal Water District

(951) 674-3146  
[www.evmwd.com](http://www.evmwd.com)

Hours of Operation:  
M-Th 7:30-5:30 F 7:30-4:30

Elsinore Valley Municipal Water District  
31315 Chaney Street  
P.O. Box 3000  
Lake Elsinore, CA 92531-3000

CONGRATULATIONS TO ALL OF THIS YEAR'S WINNERS!

# Construction to begin this fall on Lakeshore Trunk Sewer North Reach project

This fall, EVMWD expects to begin installing seven miles of new pipeline and equipment to help our southern area wastewater trunk sewer system meet the needs of our growing service area. Construction should take about 18 months.

Communication is crucial to the project's success. Residents can contact EVMWD staff to obtain the construction schedule and project updates by calling our construction hotline at (951) 893-7116 or visiting us online at [www.evmwdcipo.com](http://www.evmwdcipo.com).

- North Reach Project Construction:** The project includes a 54-inch sewer pipeline stretching approximately 3.4 miles near the downtown area of the City of Lake Elsinore. The North Reach extends from Elm Street at Lakeshore Drive to Spring Street, northerly along Spring Street to Minthorn Street, and westerly along Minthorn Street to Third Street. Construction is expected to begin in fall 2009 and last approximately 18 months.
- North Reach Construction Methods:** The pipeline will be constructed using the micro-tunneling method, a process that installs pipelines by tunneling underground versus an open trench. As segments of the pipelines are completed, the contractor will backfill and repave the streets, minimizing street detours during construction.
- Anticipated Community Impacts During Construction:** EVMWD's construction management team will monitor activities in an effort to minimize impacts to residents and businesses as much as possible. However, as with any construction project, residents and businesses can expect to see construction vehicles and increased truck traffic near the construction sites. Additional noise, dust and vibrations may be experienced during construction. Project engineers will work to ensure normal construction guidelines and noise abatement procedures are followed.

Construction is anticipated to take place between Monday and Friday from 7 a.m. to 5 p.m. Road detours will be clearly marked. Motorists are advised to use alternate routes whenever possible. Access to residences will be maintained at all times, however on-street parking may be restricted in some areas during construction. Residents will be given advance notice of any parking restrictions or if a temporary disruption of water service is necessary.

We appreciate your patience during construction as EVMWD makes these necessary improvements to our sewer system.



### Project Highlights:

**Capacity:** Increasing by 30 million gallons per day  
**Life Span:** Extended to 2050  
**Cost:** \$54 Million  
**Phases:** North Reach - the current phase of construction scheduled in fall 2009  
 South Reach - construction scheduled for 2010 or later  
 Malaga Reach - completed in 2007

# TEST YOUR WATER WISDOM

SAVE more water and money than you thought possible by paying attention to your daily habits.

Answer these questions to find out how water-smart you are. Calculate your score to see how you are doing. It might surprise you how easy it is to save water and money around your home.

- I water my landscape in the morning or at night.
  - never
  - sometimes
  - always
- I turn off the water for a whole week if it rains.
  - never
  - sometimes
  - always
- I run the dishwasher only when it's full.
  - never
  - sometimes
  - always
- I run the washing machine only when it's full.
  - never
  - sometimes
  - always
- I take showers in \_\_\_ increments.
  - ...15 minute
  - ...10 minute
  - ...5 minute
- I turn off the water while brushing my teeth.
  - never
  - sometimes
  - always
- I flush the toilet only when necessary. (I don't use the toilet as a waste basket.)
  - never
  - sometimes
  - always
- I use a broom to clean the driveway or sidewalk (instead of a hose).
  - never
  - sometimes
  - always
- I turn the water faucet off tightly.
  - never
  - sometimes
  - always
- I water the grass four times a week for a maximum of 15 minutes at a time in the summer.
  - never
  - sometimes
  - always

Evaluate your answers!  
 Every a) answer is calculated by 3 water drops  
 Every b) answer is calculated by 5 water drops  
 Every c) answer is calculated by 7 water drops

My score:  water drops

See how you are doing.

**56-70**  
 Congratulations! You are on your way to saving hundreds of gallons of water per billing cycle and thousands of gallons of water per year.

**41-55**  
 You're off to a good start! You can get great conservation tips on how to save even more water each billing cycle on indoor and outdoor water usage! For more information, visit our website [www.evmwd.com/conservation](http://www.evmwd.com/conservation) or [www.bewaterwise.com](http://www.bewaterwise.com) or see the EVMWD Residential Water Conservation Guide.

**0-40**  
 You still have a lot of room for improvement. We can help you save hundreds of gallons of water per billing cycle and thousands of gallons of water per year. For more information, visit [www.evmwd.com/conservation](http://www.evmwd.com/conservation) or [www.bewaterwise.com](http://www.bewaterwise.com) or see the EVMWD Residential Water Conservation Guide.



# THE COMMUNITY CALENDAR

## OCTOBER

- 7th ...Blood Drive at EVMWD District Headquarters from 11 a.m. to 5 p.m.
- 7th ...Lake Elsinore Fishing Derby – Fish without having to buy a sport fishing license. Free fishing days provide a great, low cost way to give fishing a try.
- 17th ...Scarecrow Festival at Marna O'Brian Park, Wildomar from 10 a.m. to 5 p.m. – Admission is free.
- 24th ...Safe Candy Night Co-Sponsored by Downtown Merchants Association on Lake Elsinore's Historic Main Street from 4 p.m. – 8 p.m.
- 31st ... Have a Save and Happy Halloween!

## NOVEMBER

- 11th ...Veterans Day – District Offices Closed
- 21st ...“Celebrating Families”... Unity in the Community Parade in Lake Elsinore at 10 a.m. The parade route will be from Graham Avenue to Main Street. For more info call Kathy at (951) 674-8423
- 26th – 27th ...Thanksgiving Holiday – District Offices Closed

## DECEMBER

- 2nd ...Blood Drive at EVMWD District Headquarters from 11 a.m. to 5 p.m.
- 4th ...Winter Fest Friday – To kick off the winter holiday season, Lake Elsinore will light the holiday tree, play in tons of snow, and provide a visit with Santa from 5 p.m. to 9 p.m.
- 23rd – 24th ...Winter Holiday – District Offices Closed
- 25th ...Merry Christmas – District Offices Closed
- 31st – 1st ...Happy New Year! – District Offices Closed

# REBATES AVAILABLE TO RESIDENTIAL AND BUSINESS CUSTOMERS

EVMWD can help you save water this fall! Starting in October, EVMWD customers will once again be eligible to receive rebates for purchasing water-saving devices.

Metropolitan Water District will offer rebates on the following:

High-Efficiency Toilets (1.28 gpf or less)	\$100	(SoCal WaterSmart)
High-Efficiency Clothes Washers (Water Factor 4.0 or less)	\$100	(SoCal WaterSmart)
Weather-Based Irrigation Controllers	\$120	(SoCal WaterSmart)

In addition, EVMWD will offer:

MP Rotator Sprinkler Nozzles	\$1/ea.	(at EVMWD office)
2 gallon-per-minute low-flow showerheads	Free	(at EVMWD office)

**Don't wait!**  
 Rebates are provided on a first come, first serve basis and are limited by funding availability. For rebates on toilets, washers, and irrigation controllers, customers need to contact SoCal WaterSmart at 1 (888) 376-3314 or go to [www.bewaterwise.com](http://www.bewaterwise.com). Showerheads can be picked up at the EVMWD main office. Customers who want MP Rotator Sprinkler Nozzles need to make an appointment with Conservation Specialist Rob Whipple at (951) 674-3146 x8247.



# EVMWD BRINGS 'HOPE' TO LOCAL NON-PROFIT

Helping Our People in Elsinore (HOPE) picked up three slightly used flat-screen computer monitors in early spring from the Information & Technology (IT) department at Elsinore Valley Municipal Water District. HOPE clothes, feeds and serves the people of Lake Elsinore and is completely run by volunteers.

With a small volunteer office staff, HOPE has been working with outdated computer equipment for some years. Since EVMWD regularly declares used materials surplus, Rotarian and EVMWD employee Mary Brown checked to see if EVMWD had any computer screens available to donate to HOPE.

HOPE runs many programs including: referral ministry, homeless outreach, emergency disaster relief, and monthly government surplus food giveaways. HOPE was started 16 years ago by several local churches and has grown into an independent non-profit organization by receiving funds through the generosity of the community and volunteers.

Presenting the equipment is Jim Ollerton, Director of the Information and Technology Department. Kelly Schoch from the IT department and Mary Brown are assisting. Gratefully accepting the computer screens is volunteer Ron Hewison.



# Drought-tolerant California-friendly plants

Is it possible to have plants that save water and adorn your garden at the same time? Absolutely!

Fall is just around the corner and it is the best time for planting! Here are some examples of California-friendly plants you might want to consider. Remember, the list consists of plants that can tolerate plenty of sunlight, require minimal water and are easily found at your local home improvement store or nursery.



**DEERGRASS**  
 (Muhlenbergia rigens)  
 A beautiful California native bunchgrass that looks good with little care and little water.

**DID YOU KNOW?**  
 Deergrass was important to many Native American tribes who used its long seed stalks as the primary material in coiled baskets.



**YELLOW DAYLILY**  
 (Hemerocallis lilioasphodelus)  
 Each flower only opens for one day. After it is spent, it is succeeded by the next day's blossom. Established clumps bloom vigorously for weeks and weeks.

**DID YOU KNOW?**  
 Hemerocallis (hem-er-o-kal-lis), the botanical name for daylily, means "beautiful for a day" in Greek.



**BOUGAINVILLEA**  
 (pronounced: boog-in-VIL-ee-uh)  
 This drought tolerant tropical vine flourishes all year in warm climates and can be found in many colors.

**DID YOU KNOW?**  
 Various types of Bougainvillea are the official flowers for the nearby cities of Laguna Niguel and San Clemente.